
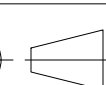
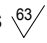

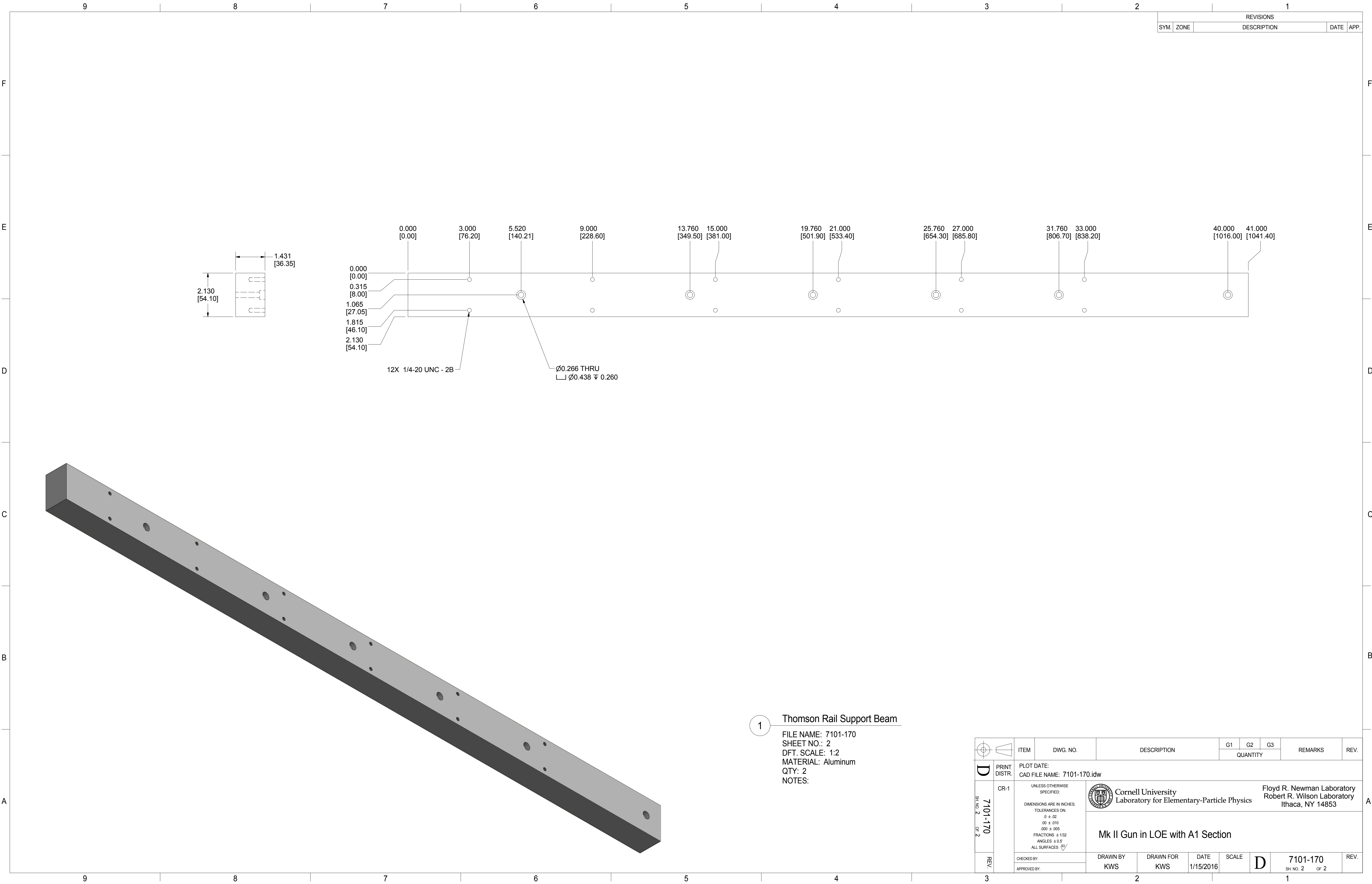



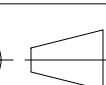
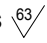
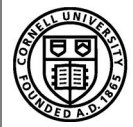
REVISIONS			
SYM.	ZONE	DESCRIPTION	DATE   APP.

 		ITEM	DWG. NO.	DESCRIPTION			G1	G2	G3	REMARKS	REV.
						QUANTITY					
D	PRINT DISTR.	PLOT DATE: CAD FILE NAME: 7101-170.idw									
	CR-1	<div>UNLESS OTHERWISE SPECIFIED:  DIMENSIONS ARE IN INCHES; TOLERANCES ON:     .0 ± .02     .00 ± .010     .000 ± .005 FRACTIONS ± 1/32 ANGLES ± 0.5° ALL SURFACES </div>		<div> Cornell University Laboratory for Elementary-Particle Physics</div> <div>Floyd R. Newman Laboratory Robert R. Wilson Laboratory Ithaca, NY 14853</div>							
7101-170 SH. NO. 1 OF 2		Mk II Gun in LOE with A1 Section									
REV.	CHECKED BY:	DRAWN BY KWS		DRAWN FOR KWS		DATE 1/15/2016	SCALE	D	7101-170 SH. NO. 1 OF 2		REV.
APPROVED BY:											



1 Thomson Rail Support Beam

FILE NAME: 7101-170  
SHEET NO.: 2  
DFT. SCALE: 1:2  
MATERIAL: Aluminum  
QTY: 2  
NOTES:

 		ITEM		DWG. NO.		DESCRIPTION		G1		G2		G3		REMARKS		REV.					
								QUANTITY													
D		PRINT DISTR.		PLOT DATE: CAD FILE NAME: 7101-170.idw																	
7101-170 SH. NO. 2 OF 2		CR-1		UNLESS OTHERWISE SPECIFIED:  DIMENSIONS ARE IN INCHES:  TOLERANCES ON:  .0 ± .02 .00 ± .010 .000 ± .005  FRACTIONS ± 1/32 ANGLES ± 0.5° ALL SURFACES 		 Cornell University Laboratory for Elementary-Particle Physics										Floyd R. Newman Laboratory Robert R. Wilson Laboratory Ithaca, NY 14853					
		Mk II Gun in LOE with A1 Section																			
REV.		CHECKED BY:		DRAWN BY		DRAWN FOR		DATE		SCALE		D		7101-170		REV.					
		APPROVED BY:		KWS		KWS		1/15/2016						SH. NO. 2 OF 2							